

CITROËN 



# NEW CITROËN ë-BERLINGO & BERLINGO VAN

Prices & Specifications

nothing  
moves us  
like Citroën

Effective from 01 April 2024 – MY24A (70)

    FOLLOW US

 ENQUIRY

 TEST DRIVE

ENHANCED ONLINE PRICES & SPECS 

# NEW CITROËN Ë-BERLINGO VAN

## Prices

Trim	Length	ELECTRIC	Maximum indicative payload (kg)	Load space (m³)*	Gross Vehicle Weight (kg)	WLTP CO <sub>2</sub> g/km***	LCDV Codes	Basic MRRP†	Government grant^	Basic price after PiVG
Enterprise	M	ë-Berlingo Panel Van M 50kWh EAT8 Auto Enterprise	781	3.3	2455	0	2CK91CNZIFT0A070	£27,955	£2,500	£25,455
	XL	ë-Berlingo Panel Van XL 50kWh EAT8 Auto Enterprise	709	3.9	2450	0	2CK95CNZIFT0A070	£28,905	£2,500	£26,405
Driver	M	ë-Berlingo Panel Van M 50kWh EAT8 Auto Driver	759	3.3	2450	0	2CK91CNZIFT09Q70	£30,055	£2,500	£27,555
	XL	ë-Berlingo Panel Van XL 50kWh EAT8 Auto Driver	691	3.9	2450	0	2CK95CNZIFT09Q70	£31,005	£2,500	£28,505
Crew Van Enterprise	XL	ë-Berlingo Crew Van XL 50kWh EAT8 Auto Enterprise	642	1.8**	2455	0	2CK9SLEZIFT0A070	£30,505	£2,500	£28,005

### Electric information at your fingertips

The driver's display behind the steering wheel provides battery charge status and there's a range of additional information via the 10 inch central touchscreen.



All information and prices correct at time of publication, but are subject to change at any time without prior notice (which may occur as a result of matters including, but not limited to, any changes in legislation and/or any changes by the government). Please see our Prices and Specifications brochures or contact your local Citroën Retailer for the most up-to-date prices and specification details for all models. CO<sub>2</sub> figures above are for a standard vehicle without any additional optional equipment. The addition of optional extras could increase the certified CO<sub>2</sub> emission output.

\* Driver versions benefit from the EXTENSO® seat which provides an additional load length of 1273 mm and increases the load volume by 0.6 m³.

\*\* Crew Van dimensions are based upon figures with the 2nd row seats in place. For information on dimensions with 2nd row seats folded, and 2nd row seats folded with EXTENSO® seat, please refer to Berlingo Dimensions page.

\*\*\*WLTP figures shown are for comparison purposes and should only be compared to the fuel consumption and CO<sub>2</sub> values of other vans tested to the same technical standard. The fuel consumption achieved, and CO<sub>2</sub> produced, in real world conditions will depend upon a number of factors including, but not limited to: the accessories fitted (pre and post registration); variations in weather; driving styles and vehicle load. The WLTP (Worldwide Harmonised Light Vehicles Test Procedure) is used to measure fuel consumption and CO<sub>2</sub> figures.

† All Manufacturer's Recommended Basic Prices are exclusive of V.A.T., Delivery to Retailer and Number Plates, Government First Registration Fee and Vehicle Excise Duty.

^ The Government PiVG is worked out at 35% of the Base Vehicle Price (incl. VAT) and including any discounts applied up to a maximum of £2,500.

Legal notice ELECTRIC VEHICLES:

The range and electric consumption figures mentioned comply with the WLTP test procedure, on the basis of which new vehicles are type approved from 1 September 2018. They may vary depending on actual conditions of use and on different factors such as: speed, thermal comfort on board the vehicle, driving style and outside temperature. The charging time depends in particular on the power of the charger on board the vehicle, the charging cable and the type and power of the charging station used.

# NEW CITROËN BERLINGO VAN

## Prices

Trim	Length	ICE	Maximum indicative payload (kg)	Load space (m <sup>3</sup> )*	Gross Vehicle Weight (kg)	WLTP CO <sub>2</sub> g/km***	LCDV Codes	Basic MRRP†
Enterprise	M	Berlingo Van M PureTech 110 S&S 6-speed Manual Enterprise	990	3.3	2310	142-171	2CK91CNL5KT0A070	£19,255
	M	Berlingo Van M BlueHDi 100 S&S 6-speed Manual Enterprise	1057	3.3	2370	136-161	2CK91CNP6KT0A070	£20,255
	M	Berlingo Van M BlueHDi 130 S&S EAT8 Auto Enterprise	1059	3.3	2385	143-171	2CK91CNP41T0A070	£22,655
	XL	Berlingo Van XL BlueHDi 100 S&S 6-speed Manual Enterprise	939	3.9	2380	136-161	2CK95CNP6KT0A070	£21,205
	XL	Berlingo Van XL BlueHDi 130 S&S EAT8 Auto Enterprise	953	3.9	2400	143-171	2CK95CNP41T0A070	£23,605
Driver	M	Berlingo Van M BlueHDi 100 S&S 6-speed Manual Driver	982	3.3	2390	136-161	2CK91CNP6KT09Q70	£22,355
	M	Berlingo Van M BlueHDi 130 S&S EAT8 Auto Driver	982	3.3	2400	143-171	2CK91CNP41T09Q70	£24,755
	XL	Berlingo Van XL BlueHDi 100 S&S 6-speed Manual Driver	936	3.9	2400	136-161	2CK95CNP6KT09Q70	£23,305
	XL	Berlingo Van XL BlueHDi 130 S&S EAT8 Auto Driver	927	3.9	2400	143-171	2CK95CNP41T09Q70	£25,705
Crew Van Enterprise	XL	Berlingo Crew Van XL BlueHDi 100 S&S 6-speed manual Enterprise	840	1.8**	2400	136-161	2CK9SLEP6KT0A070	£22,805

All information and prices correct at time of publication, but are subject to change at any time without prior notice (which may occur as a result of matters including, but not limited to, any changes in legislation and/or any changes by the government). Please see our Prices and Specifications brochures or contact your local Citroën Retailer for the most up-to-date prices and specification details for all models. CO<sub>2</sub> figures above are for a standard vehicle without any additional optional equipment. The addition of optional extras could increase the certified CO<sub>2</sub> emission output.

\* Driver versions benefit from the EXTENSO® seat which provides an additional load length of 1273 mm and increases the load volume by 0.6 m<sup>3</sup>.

\*\* Crew Van dimensions are based upon figures with the 2nd row seats in place. For information on dimensions with 2nd row seats folded, and 2nd row seats folded with EXTENSO® seat, please refer to Berlingo Dimensions page.

\*\*\*WLTP figures shown are for comparison purposes and should only be compared to the fuel consumption and CO<sub>2</sub> values of other vans tested to the same technical standard. The fuel consumption achieved, and CO<sub>2</sub> produced, in real world conditions will depend upon a number of factors including, but not limited to: the accessories fitted (pre and post registration); variations in weather; driving styles and vehicle load. The WLTP (Worldwide Harmonised Light Vehicles Test Procedure) is used to measure fuel consumption and CO<sub>2</sub> figures.

† All Manufacturer's Recommended Basic Prices are exclusive of V.A.T., Delivery to Retailer and Number Plates, Government First Registration Fee and Vehicle Excise Duty.

# NEW CITROËN È-BERLINGO & BERLINGO VAN

All Manufacturer's Recommended Basic Prices are exclusive of VAT.

## Options

- Standard equipment

\* Additional terms & conditions apply to connected services, including customer acceptance of location sharing prior to activation. Subject to subscription - after you have taken delivery of your vehicle, please subscribe on: <https://services-store.citroen.co.uk/>

	Option Code	Panel Van		Crew Van	
		Enterprise	Driver	Enterprise	
<b>Safety and security</b>		Electric	PureTech/BlueHDi	Electric	PureTech/BlueHDi
Perimetric and volumetric, Thatcham category 1 approved alarm with tilt sensor	AB13	£225		•	£225
<b>Technology and entertainment</b>					
My Citroën Drive Plus featuring 10 inch HD Colour touchscreen with Citroën Connect Navigation & DAB radio, Mirror Screen® (Apple CarPlay® and Android Auto), Bluetooth® handsfree, and USB socket. Includes Real Time Traffic updates (3 years*) & SpeedCam (3 years*) <small>*subject to subscription - <a href="#">click here</a> to subscribe</small>	ZJA4			•	£850
Smartphone Station with DAB <small>Smartphone Station with DAB is a free of charge option for the UK, Retailers must select this option when ordering a vehicle to receive the Smartphone Station with DAB</small>	ZJA0	£0			£0
<b>Load carrying</b>					
Glazed window in bulkhead	PX35	£60 <sup>1</sup>			
Offside sliding side loading door	PC19	£275 <sup>2</sup>		£275 <sup>2</sup>	•
Glazed asymmetric rear doors, opening to 180 degrees. Window in larger door is heated and includes a windscreen wiper	PB04	£200 <sup>3</sup>			•
EXTENSO® modular folding passenger bench seat with pivoting writing table, load through hatch in bulkhead and load protection cover, driver's lumbar adjustment, storage under central seat, electric parking brake	ME08	£450		•	
Non-skid wood floor trim	GB33	£270		£270	£270
<b>Electric vehicle specific</b>					
11 kW three-phase onboard charger - offers faster charging only where three-phase power is available <sup>4</sup>	LZ04	£350		£350	£350
<b>Wheels, tyres &amp; driving characteristics</b>					
16 inch 'Starlit' Black Alloy wheels	DZSC	£300 <sup>5</sup>		£300 <sup>5</sup>	
Full size steel spare wheel	LV00	£105 <sup>6</sup>		£105 <sup>6</sup>	£105 <sup>6</sup>

<sup>1</sup> Not Compatible with Bulkhead/Bench Seat (ME08).

<sup>2</sup> Standard on long wheelbase Panel Vans & all wheelbase Crew Van.

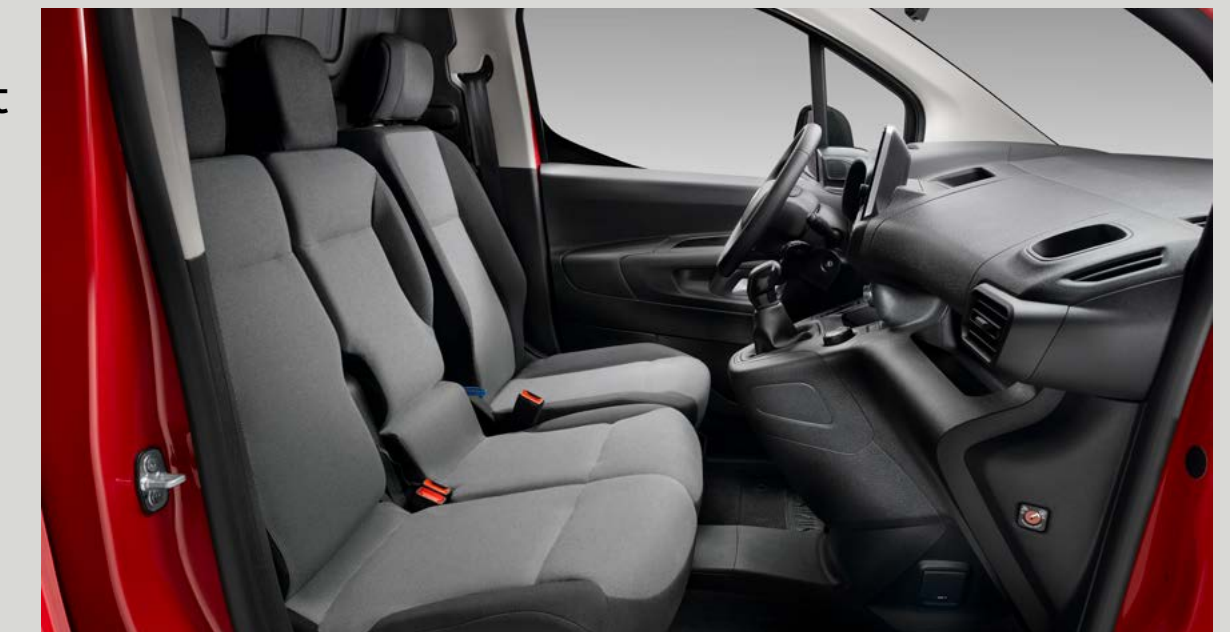
<sup>3</sup> Not compatible with City Pack (N202).

<sup>4</sup> 11 kW three-phase onboard charger option is not recommended unless you intend to charge your New È-Berlingo Van primarily from a source connected to three-phase power (unlikely if a home charge point). Using this charger in conjunction with a single-phase power source will actually charge your vehicle more slowly than the standard 7.4 kW single-phase onboard charger.

### Extenso® cabin

The modular Extenso® cab features three seats plus useful flexibility and smart storage spaces. It also accommodates longer objects from the rear extending load length to up to 3.44 m.

Three individual seats in the front for your team.



The central seatback can be folded down to access a pivoting table.



Fold the side passenger seat up to provide additional space for transporting fragile loads in the footwell.



# NEW CITROËN Ë-BERLINGO & BERLINGO VAN

All Manufacturer's Recommended Basic Prices are exclusive of VAT.

## Options

- Standard equipment

\* Additional terms & conditions apply to connected services, including customer acceptance of location sharing prior to activation. Subject to subscription - after you have taken delivery of your vehicle, please subscribe on: <https://services-store.citroen.co.uk/>

Packs	Option Code	Panel Van		Crew Van	
		Electric	PureTech/BlueHDi	Electric	PureTech/BlueHDi
<b>City Pack:</b> Dynamic Surround View, Front and Rear Park Assist, Dynamic Rearward Vision by Camera (RVC) - Camera located on the top of swing door with cabin visibility on 5 inch screen on the rear-view mirror, Visual Park Assist, Side Vision by Camera, Blind Spot Detection, Fog Lights, Reversing Camera with Top Rear Vision, Flank Guard detection of fixed obstacles, Foldable Mirror	N202	£1,050 <sup>7</sup>		•	
<b>Comfort Connect Pack:</b> Multimedia Navi System (ZJA4), Dynamic Rearward Vision by Camera (RVC) - Camera located on the top of swing door with cabin visibility on 5 inch screen on the rear-view mirror, Comfort pack: Modular bulkhead and dual passenger bench seat (ME08), Electric windows, Electric/heated/foldable mirrors, Leather heated steering wheel, Electric parking brake	J6UA	£1,700	£1,600	•	
<b>Cargo Pack:</b> Four stowage rings, LED reinforced lighting, 12V socket in loading area, 220V plug socket	ES03	£250		£250	
<b>Worksite Kit Pack:</b> Grip Control with Hill Descent Assist, Michelin Latitude Tour Mud and Snow tyres, increased ground clearance, underbody protection plate and full sized spare wheel	GA03	£450		£450	
<b>Access &amp; Go Pack:</b> Keyless Access, Wireless Charging, Automatic Climate Control, Electric Parking Brake, Automatic Windscreen Wipers, Automatic Headlamps, Fog Lights, Foldable Door Mirrors	J682	£400	£500		
<b>Drive Assist Pack:</b> Highway Integrated Assist (HIA), Adaptive Cruise Control with Stop & Go (ACC), Lane Positioning Assist (LPA), AEBS3, Extended Panels Recognition (e-TSR)	ZVL0	£1,250 <sup>8</sup>			
<b>Winter Pack:</b> Leather Heated Steering Wheel, Heatpump, Automatic Air Conditioning and Recirculation System	J6SR	£350		£350	
<b>Advanced Comfort Seats Pack:</b> Advanced Comfort Trim, Lumbar Settings and Armrests, Modular Bulkhead & Passenger Bench Seat	OPDV	£400	£500		

Exterior style				
Icy White flat paint	POPR	•		•
Kiama Blue metallic paint	ONM6	£400	£400	£400
Cumulus Grey metallic paint	M0F4	£400	£400	£400
Perla Nera Black metallic paint	M09V	£400	£400	£400
Arctic Steel special paint	E0ZR	£545 <sup>9</sup>		£545 <sup>9</sup>
Passion Red special paint	E0X9	£545 <sup>9</sup>		£545 <sup>9</sup>

5 Not Compatible with Worksite Pack (GA03). Not Compatible with Crew Van.

6 Incompatible with Worksite Pack.

7 Not compatible with Asymmetric rear doors (PB04).

8 Not compatible with L5K & P6K engine. Not Compatible with 10 inch Multimedia Navi system (ZJA4).

9 Special paint subject to extended lead times.

#### Citroën Connected Services

Vehicles equipped with the Citroën Connect box, have an embedded SIM card. So as well as the safety features of this system, a range of other 'connected services' which require data transmission, can be offered on a subscription basis. Additional terms & conditions apply to connected services, including customer acceptance of location sharing prior to activation. Subject to subscription - after you have taken delivery of your vehicle, please subscribe on: <https://services-store.citroen.co.uk/>

Telemaintenance: proactive monitoring of your vehicle & contact when something needs attention

Real Time Traffic & Speedcam Package: live data to enhance the Citroën Connect Nav system

Service availability depends on the hardware on each vehicle. To see if your vehicle is eligible for any services and subscribe, log in or create an account on <https://services-store.citroen.co.uk/>

#### SpeedCam/Danger Zones package

The SpeedCam/Danger Zones package helps you identify situations which require increased attention by sending you both audible and visual alerts (subject to settings). Within the UK the service highlights different types of speed cameras, and red light cameras, as well as accident blackspots. While the service is operational across most of Europe, it adapts as necessary when travelling in different countries to ensure the local laws with respect to Speed Camera identification are followed. This option can be added to your Citroën Connect Nav subscription at any time. Please visit <https://services-store.citroen.co.uk/> to subscribe.

## Your mobile office

Along with a secure top box for safe storage of laptops, Berlingo Van also offers wireless charging and a 220V socket to help you work on the move.



CITROËN 



# NEW CITROËN ë-DISPATCH & DISPATCH

Prices & Specifications

nothing  
moves us  
like Citroën

Effective from 01 April 2024 – MY24A (J0)

    FOLLOW US

 ENQUIRY

 TEST DRIVE

 CONFIGURE

ENHANCED ONLINE PRICES & SPECS 

# NEW CITROËN È-DISPATCH ELECTRIC

## Prices

Trim	Length	ELECTRIC	Maximum indicative payload (kg)	Load space (m <sup>3</sup> )*	Gross Vehicle Weight (kg)	WLTP CO <sub>2</sub> g/km**	LCDV Codes	Basic MRRP†	Government grant^	Basic price after PiVG
Panel Van Enterprise	M	è-Dispatch Panel Van M 75kWh Enterprise	1001	5.3	3011	0	2CK0F2NETFT0A0J0	£41,210	£5,000	£36,210
	XL	è-Dispatch Panel Van XL 75kWh Enterprise	1001	6.1	3044	0	2CK0F3NETFT0A0J0	£42,010	£5,000	£37,010
Panel Van Driver	M	è-Dispatch Panel Van M 75kWh Driver	1001	5.3	3021	0	2CK0F2NETFT09QJ0	£43,885	£5,000	£38,885
	XL	è-Dispatch Panel Van XL 75kWh Driver	1001	6.1	3053	0	2CK0F3NETFT09QJ0	£44,685	£5,000	£39,685
Crew Van Enterprise	M	è-Dispatch Crew Van M 75kWh Enterprise	940	3.2	3094	0	2CK0F7NETFT0A0J0	£43,910	£5,000	£36,210
	XL	è-Dispatch Crew Van XL 75kWh Enterprise	924	4.0	3100	0	2CK0FLNETFT0A0J0	£44,110	£5,000	£39,650
Crew Van Driver	M	è-Dispatch Crew Van M 75kWh Driver	937	3.2	3100	0	2CK0F7NETFT09QJ0	£46,585	£5,000	£41,585
	XL	è-Dispatch Crew Van XL 75kWh Driver	915	4.0	3100	0	2CK0FLNETFT09QJ0	£46,785	£5,000	£41,785



All information and prices correct at time of publication, but are subject to change at any time without prior notice (which may occur as a result of matters including, but not limited to, any changes in legislation and/or any changes by the government). Please see our Prices and Specifications brochures or contact your local Citroën Retailer for the most up-to-date prices and specification details for all models. CO<sub>2</sub> figures above are for a standard vehicle without any additional optional equipment. The addition of optional extras could increase the certified CO<sub>2</sub> emission output.

\* Driver versions benefit from the EXTENSO® seat which provides an additional load length of 1162mm and increases the load volume by 0.5m<sup>3</sup>.

\*\* WLTP figures shown are for comparison purposes and should only be compared to the fuel consumption and CO<sub>2</sub> values of other vans tested to the same technical standard. The fuel consumption achieved, and CO<sub>2</sub> produced, in real world conditions will depend upon a number of factors including, but not limited to: the accessories fitted (pre and post registration); variations in weather; driving styles and vehicle load. The WLTP (Worldwide Harmonised Light Vehicles Test Procedure) is used to measure fuel consumption and CO<sub>2</sub> figures.

† All Manufacturer's Recommended Basic Prices are exclusive of V.A.T., Delivery to Retailer and Number Plates, Government First Registration Fee and Vehicle Excise Duty.

^ The Government PiVG is worked out at 35% of the Base Vehicle Price (incl. VAT) and including any discounts applied up to a maximum of £5,000.

Legal notice ELECTRIC VEHICLES:

The range and electric consumption figures mentioned comply with the WLTP test procedure, on the basis of which new vehicles are type approved from 1 September 2018. They may vary depending on actual conditions of use and on different factors such as: speed, thermal comfort on board the vehicle, driving style and outside temperature. The charging time depends in particular on the power of the charger on board the vehicle, the charging cable and the type and power of the charging station used.

# NEW CITROËN DISPATCH

## Prices

Trim	Length	ICE	Maximum indicative payload (kg)	Load space (m³)	Gross Vehicle Weight (kg)	WLTP CO <sub>2</sub> g/km**	LCDV Codes	Basic MRRP†
Panel Van Enterprise	M	Dispatch Panel Van M BlueHDi 120 S&S 6-speed Manual Enterprise	1182	5.3	2830	164-191	2CK0F2NP7KT0A0J0	£26,710
	M	Dispatch Panel Van M BlueHDi 145 6-speed Manual Enterprise	1384	5.3	3100	191-216	2CK0F2NWR6T0A0J0	£28,010
	M	Dispatch Panel Van M BlueHDi 145 S&S EAT8 Auto Enterprise	1349	5.3	3100	186-215	2CK0F2NWR1T0A0J0	£29,510
	XL	Dispatch Panel Van XL BlueHDi 120 S&S 6-speed Manual Enterprise	1130	6.1	2830	169-193	2CK0F3NP7KT0A0J0	£27,610
	XL	Dispatch Panel Van XL BlueHDi 145 6-speed Manual Enterprise	1315	6.1	3070	191-216	2CK0F3NWR6T0A0J0	£28,910
	XL	Dispatch Panel Van XL BlueHDi 145 S&S EAT8 Auto Enterprise	1329	6.1	3100	186-215	2CK0F3NWR1T0A0J0	£30,410
Panel Van Driver	M	Dispatch Panel Van M BlueHDi 120 S&S 6-speed Manual Driver	1173	5.3	2830	164-191	2CK0F2NP7KT09QJ0	£29,385
	M	Dispatch Panel Van M BlueHDi 145 6-speed Manual Driver	1375	5.3	3100	191-216	2CK0F2NWR6T09QJ0	£30,685
	XL	Dispatch Panel Van XL BlueHDi 120 S&S 6-speed Manual Driver	1121	6.1	2830	169-193	2CK0F3NP7KT09QJ0	£30,285
	XL	Dispatch Panel Van XL BlueHDi 145 6-speed Manual Driver	1335	6.1	3100	191-216	2CK0F3NWR6T09QJ0	£31,585
Crew Van Enterprise	M	Dispatch Crew Van M BlueHDi 145 6-speed Manual Enterprise	1242	3.2	3060	191-216	2CK0F7NWR6T0A0J0	£30,710
	XL	Dispatch Crew Van XL BlueHDi 145 6-speed Manual Enterprise	1172	4.0	3030	191-216	2CK0FLNWR6T0A0J0	£30,910



### New Dispatch Crew Van and Dispatch

The spacious Crew Van can seat six and up to 4m<sup>3</sup> of cargo volume.

All information and prices correct at time of publication, but are subject to change at any time without prior notice (which may occur as a result of matters including, but not limited to, any changes in legislation and/or any changes by the government). Please see our Prices and Specifications brochures or contact your local Citroën Retailer for the most up-to-date prices and specification details for all models. CO<sub>2</sub> figures above are for a standard vehicle without any additional optional equipment. The addition of optional extras could increase the certified CO<sub>2</sub> emission output.

\* Driver versions benefit from the EXTENSO® seat which provides an additional load length of 1162mm and increases the load volume by 0.5m<sup>3</sup>.

\*\* WLTP figures shown are for comparison purposes and should only be compared to the fuel consumption and CO<sub>2</sub> values of other vans tested to the same technical standard. The fuel consumption achieved, and CO<sub>2</sub> produced, in real world conditions will depend upon a number of factors including, but not limited to: the accessories fitted (pre and post registration); variations in weather; driving styles and vehicle load. The WLTP (Worldwide Harmonised Light Vehicles Test Procedure) is used to measure fuel consumption and CO<sub>2</sub> figures.

† All Manufacturer's Recommended Basic Prices are exclusive of V.A.T., Delivery to Retailer and Number Plates, Government First Registration Fee and Vehicle Excise Duty.

‡ The Government P1VG is worked out at 35% of the Base Vehicle Price (incl. VAT) and including any discounts applied up to a maximum of £5,000.



# NEW CITROËN E-DISPATCH & DISPATCH

All Manufacturer's Recommended Basic Prices are exclusive of VAT.

## Options

### • Standard equipment

\* Additional terms & conditions apply to connected services, including customer acceptance of location sharing prior to activation. Subject to subscription - after you have taken delivery of your vehicle, please [click here](#) to subscribe.

Technology and entertainment	Option code	Panel Van		Crew Van	
		Enterprise	Driver	Enterprise	Driver
<b>Connect Nav Pack:</b> My Citroën Drive Plus featuring 10" Colour touchscreen with Citroën Connect Navigation & DAB radio, Bluetooth® handsfree, USB socket, bi-tuner, Apple CarPlay™, Android Auto and coffee break alert (indicating 2 hours' continuous driving) - Includes Real Time Traffic updates and SpeedCam subscription - 3 year subscription. Front fog lights and electrically folding mirrors	ZJA9	£1,100	•	£1,100	•
<b>Seating, comfort and convenience</b>					
<b>Driver Assist Pack:</b> Active Cruise Control (on manual versions), Stop & Go (on automatic versions), Leather heated steering wheel with mounted audio controls, Electronic Parking Brake, Acoustic Windscreen and Heated Driver's Seat	ZVKT (manual) ZVKS (auto)	£600 <sup>1</sup>	£600 <sup>1</sup>	£600 <sup>1</sup>	£600 <sup>1</sup>
<b>City Pack with Dynamic Surround View:</b> Digital rear view mirror and lateral side view, Reversing Camera with Top Rear Vision, Blind Spot Monitoring, Front Park Assist, Flankguard detection of fixed obstacles, electric folding door mirrors, Auto lights and wipers, heated power folding door mirrors and front fog lights	WYAZ	£1,400 <sup>2</sup>	•	£1,400 <sup>2</sup>	•
Individual front passenger seat with armrest. Height adjustable driver's seat with lumbar adjustment and armrest	WAAS	£0 <sup>3</sup>		£0 <sup>3</sup>	
<b>Moduwork®:</b> dual passenger bench seat with fold-up outer seat, fold-down writing table in central seat back and storage under central seat. Height adjustable driver's seat with lumbar adjustment and armrest	WAAT	£350 <sup>4</sup>	•		
<b>Camera Park:</b> Visiopark 180° (Rear Parking Camera)	WYAX	£900	•	£900	•
<b>Urban Pack:</b> Front park assist, Flankguard, Blind-Spot Detection, Power-folding Mirrors, Fog-Lights	WYAW	£650	•	£650	•
<b>Safety and security</b>					
Side airbags - 1st row Driver & Passenger (head and thorax)	NF26	£400	£400	•	•
Perimetric and volumetric, Thatcham category 1 approved alarm	AB08	£225	•	£225	•
<b>Doors &amp; windows</b>					
Fixed side windows in sliding side doors, with noise-reducing tinted glass	VG07	£120 <sup>5</sup>	£120 <sup>5</sup>		
Twin glazed rear doors (opening to 180°) with heated rear windows and wash-wipe	WO05	£300 <sup>6</sup>	£300 <sup>6</sup>	£300 <sup>6</sup>	£300 <sup>6</sup>
Tailgate with heated window and wash-wipe	WO06	£300 <sup>7</sup>	£300 <sup>7</sup>	£300 <sup>7</sup>	£300 <sup>7</sup>

1 Not available on BlueHDI 120 S&S 6-speed Manual versions.

2 Not available with Tailgate or Glazed Rear Doors.

3 Incompatible with Moduwork®.

4 Brings full steel bulkhead with load-through flap under outer passenger seat.

5 Approx. 30% opacity.

6 Central Rear view Mirror Prismatic Deletes 2 rear roof brackets used for fixing roof racks. Not compatible with WYAZ.

7 Not compatible with WYAZ.

8 Requires WO05 or WO06.

9 WO05 & PX37 ordered together also then include RL02: Central Rear view Mirror Prismatic.

10 Not available on ESF (50kWh BEV); EZF (75kWh BEV).

11 Special paint subject to extended lead times.

Load carrying	Option code	Panel Van		Crew Van	
		Enterprise	Driver	Enterprise	Driver
Coated anti-slip 9mm wood floor with aluminium rods	GB33	£400	£400	£400	£400
Glazed Bulkhead	PX35	TBC <sup>8</sup>	TBC <sup>8</sup>		
Full, toughened plastic bulkhead, insulated for sound and temperature, with polycarbonate window	PX37	£200 <sup>9</sup>	£200 <sup>9</sup>		
<b>Wheels, tyres &amp; driving characteristics</b>					
17 inch 'Phoenix' alloy wheels with Agilis tyres	ZHZJ	£650	£650	£650	£650
Full sized spare wheel with black steel rim	RS03	£100	£100	£100	£100
<b>Worksite Pack:</b> Enhanced Ground Clearance (175mm), Engine Protection Plate, Full Sized Spare Wheel	GA04	£950 <sup>10</sup>		£950 <sup>10</sup>	
11KW Tri-phase On Board Charger (Electric vehicles only). Offers faster charging where three-phase power is available	LZ04	£400	£400	£400	£400
<b>Towing</b>					
Removable Towbar with ball and hook, 13 pin connector and Trailer Sway Mitigation	AQ10	£700	£700	£700	£700
<b>Converter equipment</b>					
<b>Converter Pack:</b> Upgraded battery and alternator (L3 720 battery, class 18 alternator), towbar pre-conditioning (rear electric harness + fast connectors (behind rear bumper) + beam with 13 pin socket), Conversion interface box - Only for use for electrical connections for integral elements of a vehicle conversion	BQ01	£400	£400	£400	£400
<b>Exterior style</b>					
Icy White flat paint	POPR	•	•	•	•
Cumulus Grey metallic paint	M0F4	£540	£540	£540	£540
Titanium Grey metallic paint	M01J	£540	£540	£540	£540
Perla Nera Black metallic paint	M09V	£540	£540	£540	£540
Passion Red special paint	E0X9	£700 <sup>11</sup>		£700 <sup>11</sup>	
Imperial Blue special paint	E04P	£700 <sup>11</sup>		£700 <sup>11</sup>	

### SpeedCam/Danger Zones package

The SpeedCam/Danger Zones package helps you identify situations which require increased attention by sending you both audible and visual alerts (subject to settings). Within the UK the service highlights different types of speed cameras, and red light cameras, as well as accident blackspots. While the service is operational across most of Europe, it adapts as necessary when travelling in different countries to ensure the local laws with respect to Speed Camera identification are followed. This option can be added to your Citroën Connect Nav subscription at any time. Please visit <https://services-store.citroen.co.uk/> to subscribe.

# CITROËN



# NEW CITROËN È-RELAY & RELAY

## Prices & Specifications

nothing  
moves us  
like Citroën

Effective from 1 April 2024 – MY24

[f](#) [t](#) [i](#) [v](#) FOLLOW US

[✉](#) ENQUIRY

[🚗](#) TEST DRIVE

[➔](#) ENHANCED ONLINE PRICES & SPECS

# NEW CITROËN E-RELAY & RELAY

## Prices

Trim	Length/Height	ELECTRIC	Maximum indicative payload (kg)	Load space (m³)	Gross Vehicle Weight (kg)	WLTP CO <sub>2</sub> g/km*	LCDV Codes	Basic MRRP†	Government grant^	Basic price after PiVG
Panel Van Enterprise	L3H2	ë-Relay Panel Van L3H2 35 110kWh Enterprise	635	13	3500	0	TBC	£49,485	£5,000	£44,485
	L3H2	ë-Relay Panel Van L3H2 40 110kWh Enterprise	1385	13	4000	0	2CXE5MHYAFU0A010	£50,295	£5,000	£45,295
	L3H3	ë-Relay Panel Van L3H3 40 110kWh Enterprise	1360	15	4000	0	2CXE5PHYAFU0A010	£51,105	£5,000	£46,105
	L4H2	ë-Relay Panel Van L4H2 40 110kWh Enterprise	1340	15	4000	0	2CXE7MHYAFU0A010	£51,105	£5,000	£46,105
	L4H3	ë-Relay Panel Van L4H3 40 110kWh Enterprise	1310	17	4000	0	2CXE7PHYAFU0A010	£51,915	£5,000	£46,915
Window Van Enterprise	L4H2	ë-Relay Window Van L4H2 40 110kWh Enterprise	1340	15	4000	0	2CXE7YHYAFU0A010	£51,555	£5,000	£46,555



All information and prices correct at time of publication, but are subject to change at any time without prior notice (which may occur as a result of matters including, but not limited to, any changes in legislation and/or any changes by the government). Please see our Prices and Specifications brochures or contact your local Citroën Retailer for the most up-to-date prices and specification details for all models. CO<sub>2</sub> figures above are for a standard vehicle without any additional optional equipment. The addition of optional extras could increase the certified CO<sub>2</sub> emission output.

\* WLTP figures shown are for comparison purposes and should only be compared to the fuel consumption and CO<sub>2</sub> values of other vans tested to the same technical standard. The fuel consumption achieved, and CO<sub>2</sub> produced, in real world conditions will depend upon a number of factors including, but not limited to: the accessories fitted (pre and post registration); variations in weather; driving styles and vehicle load. The WLTP (Worldwide Harmonised Light Vehicles Test Procedure) is used to measure fuel consumption and CO<sub>2</sub> figures.

† All Manufacturer's Recommended Basic Prices are exclusive of V.A.T., Delivery to Retailer and Number Plates, Government First Registration Fee and Vehicle Excise Duty.

^ The Government PiVG is worked out at 35% of the Base Vehicle Price (incl. VAT) and including any discounts applied up to a maximum of £5,000.

Legal notice ELECTRIC VEHICLES:

The range and electric consumption figures mentioned comply with the WLTP test procedure, on the basis of which new vehicles are type approved from 1 September 2018. They may vary depending on actual conditions of use and on different factors such as: speed, thermal comfort on board the vehicle, driving style and outside temperature. The charging time depends in particular on the power of the charger on board the vehicle, the charging cable and the type and power of the charging station used.

# NEW CITROËN E-RELAY & RELAY

## Prices

Trim	Length/Height	ICE	Maximum indicative payload (kg)	Load space (m³)	Gross Vehicle Weight (kg)	WLTP CO <sub>2</sub> g/km*	LCDV Code	Basic MRRP†
Panel Van Enterprise	L2H1	Relay Panel Van L2H1 35 BlueHDi 140 S&S 6-speed Manual Enterprise	1425	10	3500	198-216	2CXE3EHOKKU0A010	£30,315
	L2H2	Relay Panel Van L2H2 35 BlueHDi 140 S&S 6-speed Manual Enterprise	1400	11.5	3500	205-231	2CXE3KHOKKU0A010	£31,125
	L2H2	Relay Panel Van L2H2 35 BlueHDi 140 S&S EAT8 Auto Enterprise	1340	11.5	3500	226-255	2CXE3KHOK1U0A010	£33,225
	L3H2	Relay Panel Van L3H2 35 BlueHDi 140 S&S 6-speed Manual Enterprise	1350	13	3500	205-231	2CXE5KHOKKU0A010	£31,935
	L3H2	Relay Panel Van L3H2 35 BlueHDi 140 S&S EAT8 Auto Enterprise	1290	13	3500	226-255	2CXE5KHOK1U0A010	£34,035
	L3H3	Relay Panel Van L3H3 35 BlueHDi 140 S&S 6-speed Manual Enterprise	1325	15	3500	217-239	2CXE5NHOKKU0A010	£32,745
	L3H2	Relay Panel Van L3H2 35 Heavy BlueHDi 140 S&S 6-speed Manual Enterprise	1310	13	3500	205-231	2CXE5LHOKKU0A010	£32,385
	L4H2	Relay Panel Van L4H2 35 Heavy BlueHDi 140 S&S 6-speed Manual Enterprise	1265	15	3500	205-231	2CXE7LHOKKU0A010	£33,195
	L4H3	Relay Panel Van L4H3 35 Heavy BlueHDi 140 S&S 6-speed Manual Enterprise	1235	17	3500	217-239	2CXE7OHOKKU0A010	£34,005
	L4H2	Relay Panel Van L4H2 40 Heavy BlueHDi 180 S&S EAT8 Auto Enterprise	1955	15	4000	TBC	2CXE7MHOR1U0A010	£37,505
Window Van Enterprise	L3H2	Relay Window Van L3H2 35 BlueHDi 140 S&S 6-speed Manual Enterprise	1350	13	3500	205-231	2CXE5WHOKKU0A010	£32,385
	L4H2	Relay Window Van L4H2 40 Heavy BlueHDi 140 S&S 6-speed Manual Enterprise	1975	15	4000	TBC	2CXE7YHOKKU0A010	£34,455



All information and prices correct at time of publication, but are subject to change at any time without prior notice (which may occur as a result of matters including, but not limited to, any changes in legislation and/or any changes by the government). Please see our Prices and Specifications brochures or contact your local Citroën Retailer for the most up-to-date prices and specification details for all models. CO<sub>2</sub> figures above are for a standard vehicle without any additional optional equipment. The addition of optional extras could increase the certified CO<sub>2</sub> emission output.

\* WLTP figures shown are for comparison purposes and should only be compared to the fuel consumption and CO<sub>2</sub> values of other vans tested to the same technical standard. The fuel consumption achieved, and CO<sub>2</sub> produced, in real world conditions will depend upon a number of factors including, but not limited to: the accessories fitted (pre and post registration); variations in weather; driving styles and vehicle load. The WLTP (Worldwide Harmonised Light Vehicles Test Procedure) is used to measure fuel consumption and CO<sub>2</sub> figures.

† All Manufacturer's Recommended Basic Prices are exclusive of V.A.T., Delivery to Retailer and Number Plates, Government First Registration Fee and Vehicle Excise Duty.

^ The Government P1VG is worked out at 35% of the Base Vehicle Price (incl. VAT) and including any discounts applied up to a maximum of £5,000.

Legal notice ELECTRIC VEHICLES:

The range and electric consumption figures mentioned comply with the WLTP test procedure, on the basis of which new vehicles are type approved from 1 September 2018. They may vary depending on actual conditions of use and on different factors such as: speed, thermal comfort on board the vehicle, driving style and outside temperature. The charging time depends in particular on the power of the charger on board the vehicle, the charging cable and the type and power of the charging station used.

# NEW CITROËN E-RELAY & RELAY

All Manufacturer's Recommended Basic Prices are exclusive of VAT.

## Options

### • Standard equipment

Delivery to Retailer and Number Plates, Government First Registration Fee and Vehicle Excise Duty.

Standalone Options	Option Code				
		Panel Van Electric	Panel Van	Window Van Electric	Window Van
2nd sliding side door	PC12	£410	£410	£410	£410
Privacy side windows	VD10	£270	£270	£270	£270
Smart tachograph	HC09	£630 <sup>1</sup>	£630 <sup>1</sup>	•	•
Multi season tyre	MI32	£270	£270	£270	£270
Glazed partition	PX09	£140	£140	£140	£140
Engine sump protection	FX01	£90 <sup>2</sup>	£90 <sup>2</sup>	£90 <sup>2</sup>	£90 <sup>2</sup>
Additional key with remote control	JA17	£50 <sup>2</sup>	£50 <sup>2</sup>	£50 <sup>2</sup>	£50 <sup>2</sup>
Front side air bags and window air bags	NF04	£540	£540	£540	£540
Glazed sliding side door	PC10	£230	£230	•	•
Speed limiter (90 km/h)	SB13	£0 <sup>1</sup>	£0 <sup>1</sup>	£0 <sup>1</sup>	£0 <sup>1</sup>
Sliding Glass in Sliding Doors	VG02			£320	£320
Fixed towing hook	AQ03	£500 <sup>2</sup>	£500 <sup>2</sup>	£500 <sup>2</sup>	£500 <sup>2</sup>
Double Leaf Rear Suspension	SE08		£120		£120
Full wheel hub caps	ZIAT/ ZIAV	£50	£50	£50	£50
Metallic paint	No code	£650	£650	£650	£650

Packs	Option Code				
		Panel Van Electric	Panel Van	Window Van Electric	Window Van
<b>Worksite Heavy Pack:</b> Traction plus (UF04), M+S Tyres (MI32), Double leaf rear suspension (SE08), Spare wheel winch (TD01), Spare wheel (RS03) and Wheel arch mouldings (XX03/XX01)	J6LK / J6LJ		£770		£770
<b>Cargo Plus Pack:</b> Floor protections (GB34), Full height wall protections (high level) (GB33), 12V socket cargo area (ES02), 270 rear opening doors (LL02), Central led in cargo area (FC71), Handles on rear and sliding door (CR35), Rear and sliding door led in cargo area (FC71)	J6CK	£1,310	£1,310	£1,310	£1,310
<b>Conversion Pack:</b> Transformation socket (JI01), Powerful alternator (220A) (7KK), Powerful battery (105Ah) (BF02)	J101	£230	£230	£230	£230
<b>Spare Wheel &amp; Winch Pack:</b> Spare wheel (RS03), Spare wheel winch (TD01)	RS03	£180	£180	£180	£180
<b>City Plus Pack:</b> Blind Spot Assist and Rear Cross Path Detection (AO03), Electric folding wing mirrors (HU02), 360 Perimeter Parking Sensors (UB24), Digital Rearview Mirror (N201)	J6S4	£1,130	£1,130	£1,130	£1,130
<b>City Plus Pack N2:</b> Blind Spot Assist and Rear Cross Path Detection (AO03), 360 Perimeter Parking Sensors (UB24), Digital Rearview Mirror (N201)	J6S5	£1,130	£1,130	£1,130	£1,130
<b>Techno Plus Pack:</b> 10" Radio NAV AA/CP (ZJB5), Automatic Climate Control (RE07), Double USB charging port (ZJB5), Connected services (ZJB5), Wireless charger (E301), Full digital cockpit (GMBD)	J6MA	£1,530	£1,530	£1,530	£1,530
<b>Handsfree &amp; Socket Pack:</b> Keyless Entry and Go (YD01), Electric parking brake (FH05), 230V Socket (ES11)	J6LR	£450	£450	£450	£450
<b>Visibility Plus Pack:</b> Rain and dusk sensors & High Beam Recognition (NB08), Fog lights with cornering function (PR03), Full LED headlamps (LA05)	J6MV	£680	£680	£680	£680
<b>Visibility Plus Pack N2:</b> Rain and dusk sensors & High Beam Recognition (NB08), Full LED headlamps (LA05)	J6MW	£590	£590	£590	£590
<b>Style &amp; Visibility Pack:</b> Painted Bumpers, Black Skid Plates, 16" Alloy Diamond Black Wheels (Light), Rain & Dusk Sensors and High Beam Recognition, Fog Lights with Cornering Function, Full LED Headlamps	J6VU	£1,360	£1,360	£1,360	£1,360
<b>Style &amp; Visibility Pack:</b> Painted Bumpers, Black Skid Plates, 16" Alloy Diamond Black Wheels (Heavy), Rain & Dusk Sensors and High Beam Recognition, Fog Lights with Cornering Function, Full LED Headlamps	J6VV	£1,360	£1,360	£1,360	£1,360

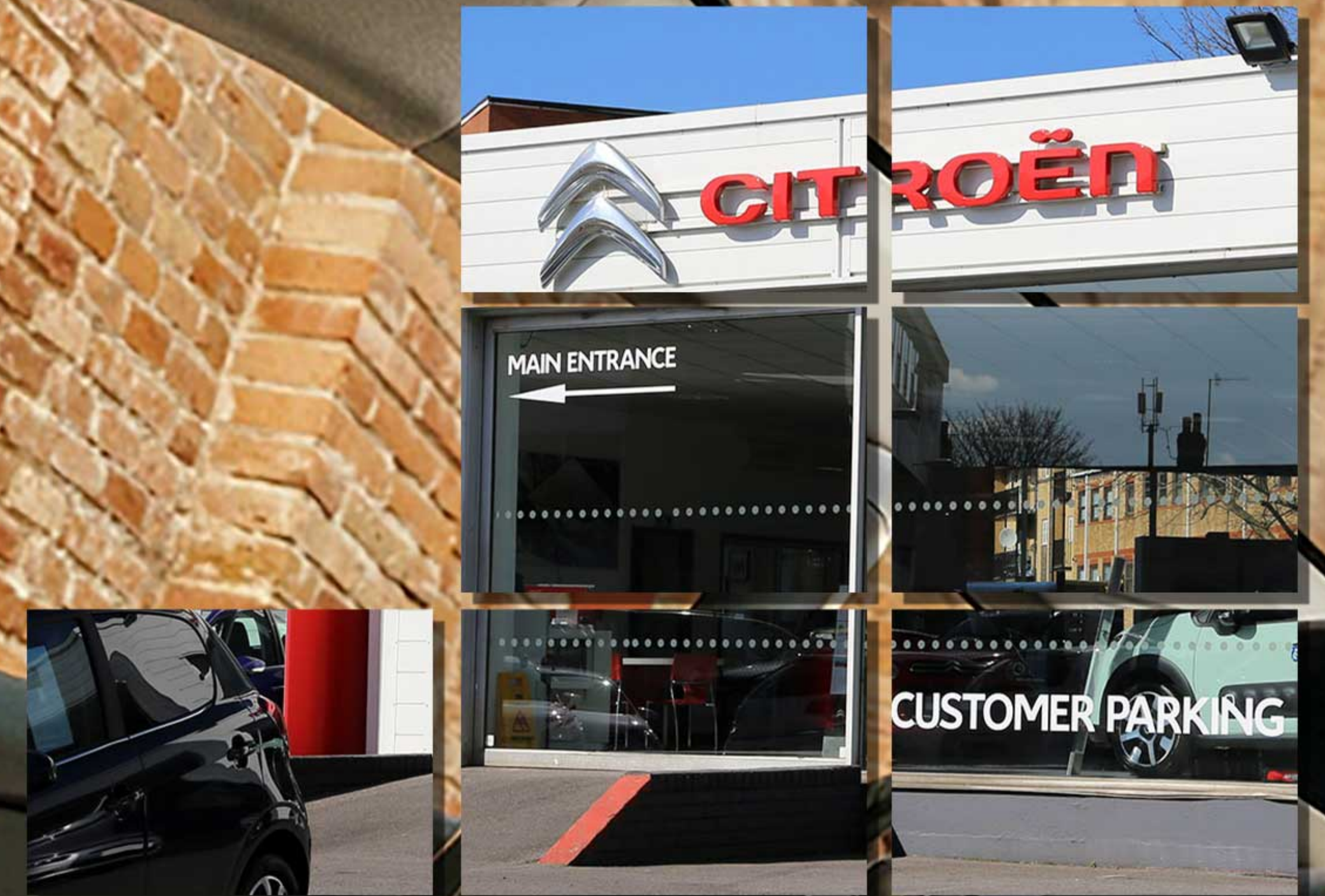
<sup>1</sup> Standard on >4,000kg GVW (N2).

<sup>2</sup> Available on BlueHDI only.

<sup>3</sup> Not available on Electric versions.



↓ Your journey starts here



Learn more  
Book a Test Drive  
Apply for Finance

[CHARTERSCITROEN.COM](https://www.charterscitroen.com)